

## Domestic Violence Harms ALL Members of a Family

The following are extracts of the overall CMIS data held in each participating country site. These charts represent the total number of cases which have been reported to the DV units; a breakdown of the age and sex of victims for each of the four original participating countries; and a similar breakdown on the details of the offenders.

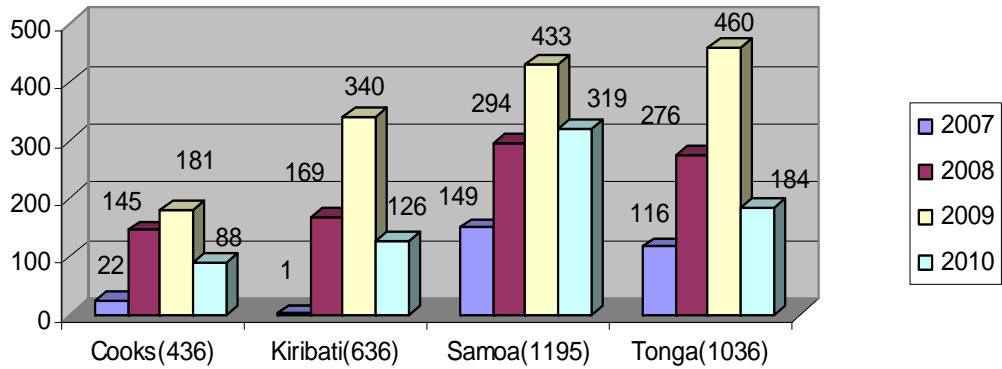
The majority of these victims are women but analysis of the data captured from the reports to police using the CMIS database show that many cases are reported by male victims, and both men and women are described as offenders in domestic violence cases.

<b>Country</b>	<b>Victims</b>	<b>Offenders</b>
<u>Cook Islands</u>		
Female	79.6%	71.5%
Male	20.4%	18.5%
<u>Samoa</u>		
Female	75.7%	85.3%
Male	24.3%	14.7%
<u>Tonga</u>		
Female	84.8%	84.7%
Male	15.2%	15.3%
<u>Kiribati</u>		
Female	87.0%	94.6%
Male	13.0%	5.4%

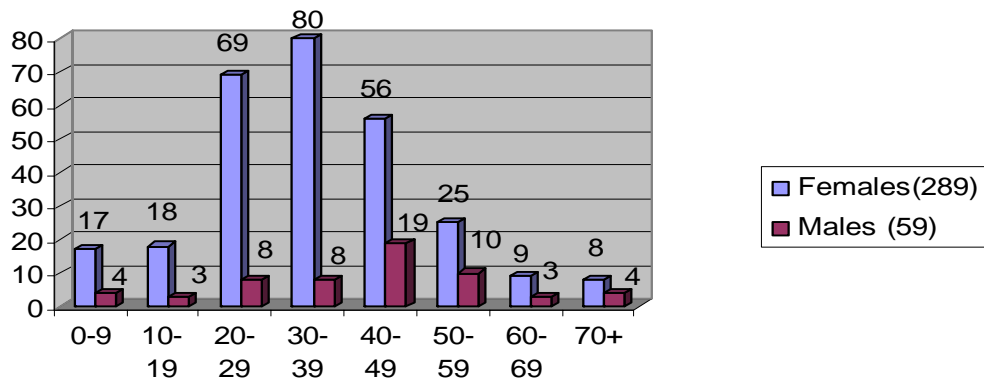
Further specific data analysis can be obtained through a written request to the PPDVP Implementation Team at [ppdvp@police.govt.nz](mailto:ppdvp@police.govt.nz) or directly to a domestic violence unit in a country where the system is deployed. Examples of the wider range of data are available for each country at [www.ppdvp.org.nz](http://www.ppdvp.org.nz).

Important note - The data below is for a period beyond the period covered in this Annual Report. The 2010 totals are from data provided from the DVU in Cook Islands, Samoa and Kiribati up to the end of July 2010. The Tonga data is only complete until the 8th of April 2010. The rationalization of the data to correct these anomalies, and updating of records which have yet to be included, is underway at the time of this annual report being completed.

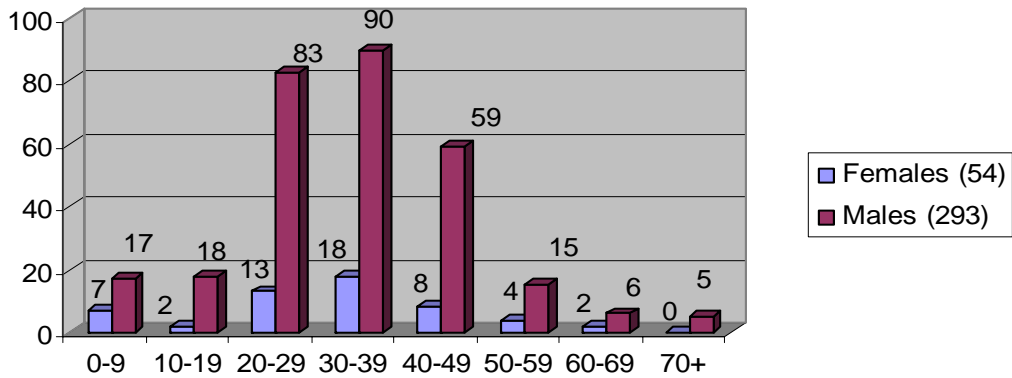
### All Recorded Incidents for Participating Countries on CMIS database



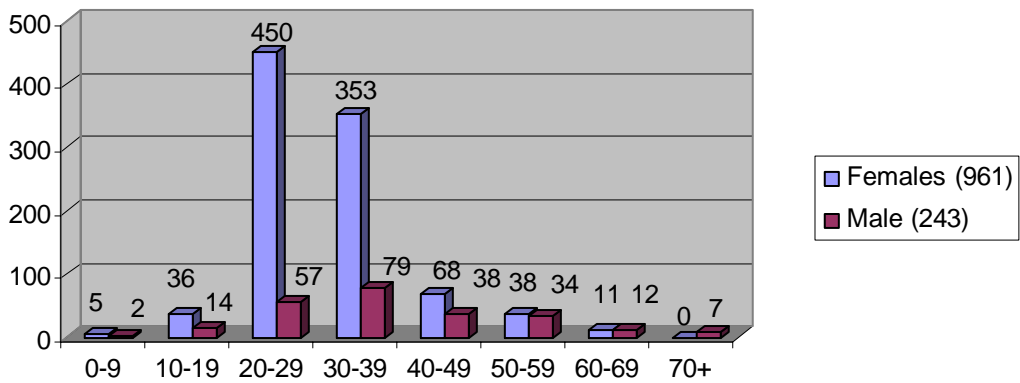
### Cook Islands Victims Age & Sex July 2007 - July 2010



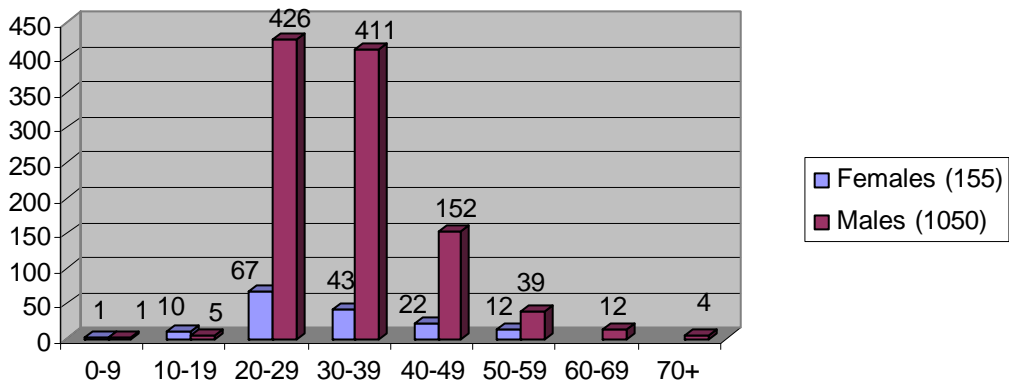
### Cook Islands Offenders Age & Sex July 2007- July 2010



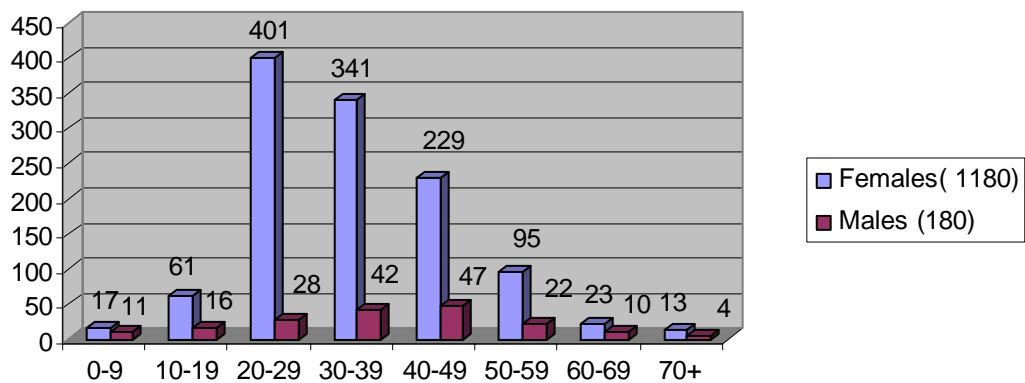
### Samoa Victims Age & Sex January 2007- July 2010



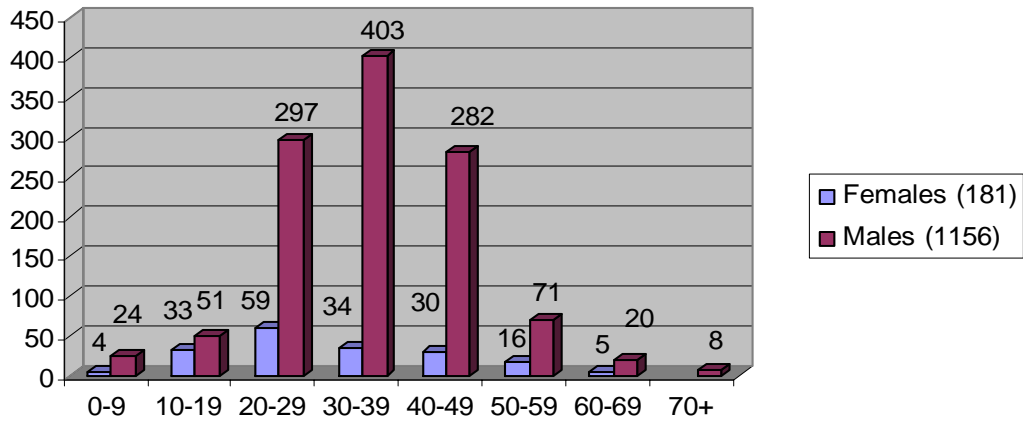
### Samoa Offenders Age & Sex January 2007 - July 2010



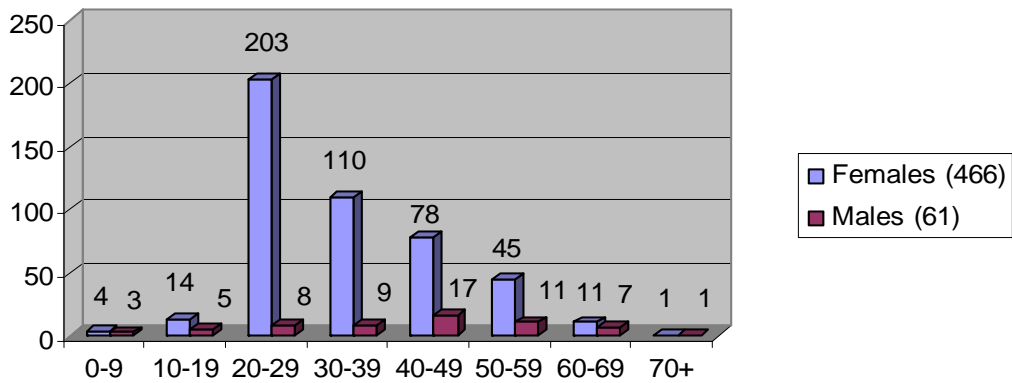
### Tonga's Victims Age & Sex August 2007 - April 2010



**Tongas Offenders Age & Sex August 2007 - April 2010**



**Kiribati Victims Age & Sex  
January 2008 - July 2010**



**Kiribati Offenders Age & Sex  
January 2008 - July 2010**

