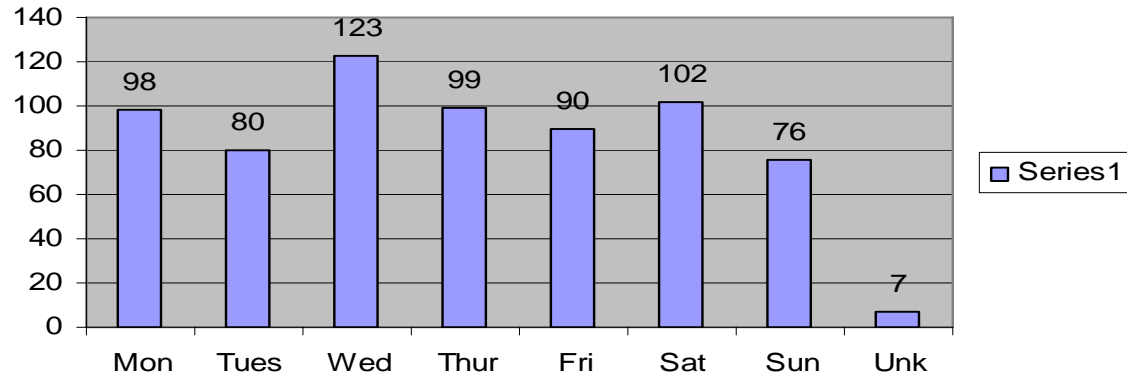
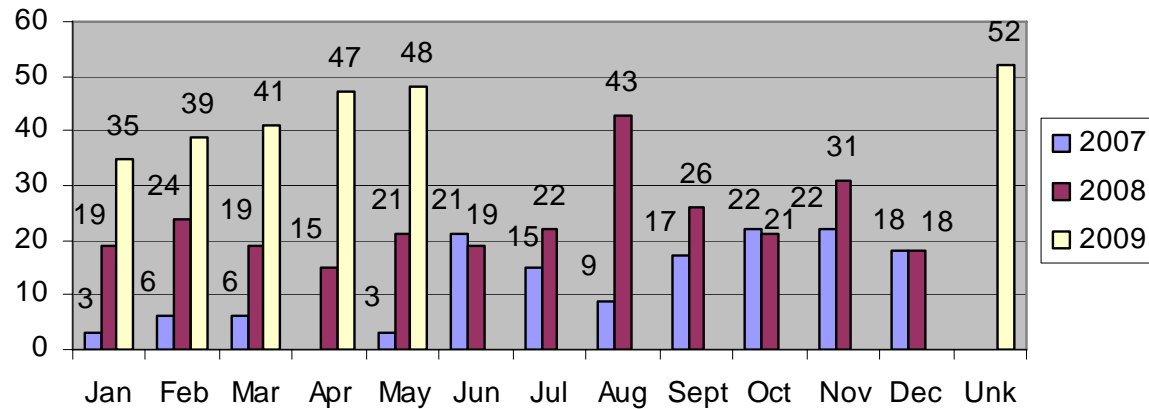


Days of the Week



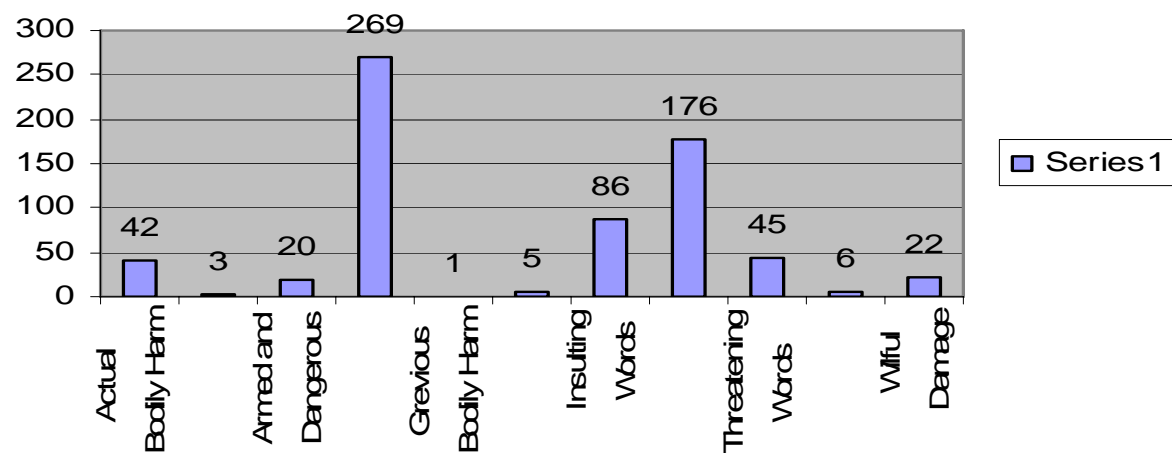
Shows the number of offences reported to police on each day of the week, allowing staff to be on duty at the appropriate times and days.

All Reported Incidents



This chart shows the numbers of reported cases over the three year cycle. Using a chart like this makes it clear that the level of reporting of incidents initially increased and that it may now be reaching a plateau level of about 45 cases each month. The reason for the initial increase is due to a number of factors including the police's ability to respond, as well as public confidence in reporting.

All Offences



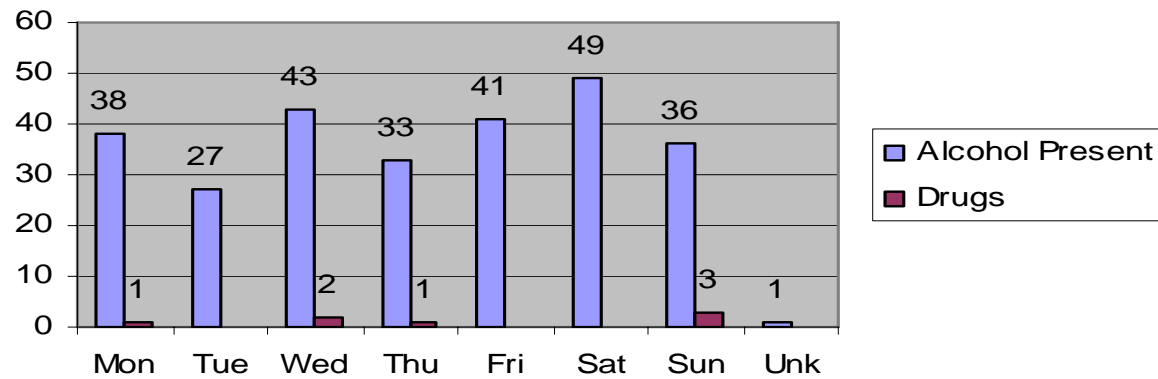
This chart shows the types of offences involved in a domestic or family violence incident. The highest spike of 269 cases is Assault, with Police Help - or assistance given to resolve the incident of 176, being next. Many DV cases have a mix of offences within them.

Repeat Offenders



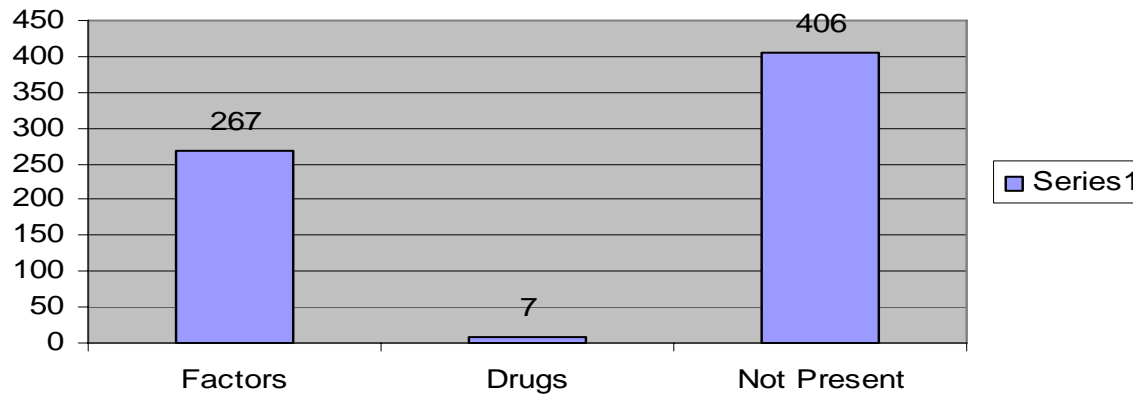
This chart indicates that 38 reported cases involved the police being involved on at least two occasions, and 8 being involved in more than 3 incidents. Data such as this allows the police, NGO's and other agencies to focus on the "at risk families" who are repeat victims, and on repeat offenders.

All Incidents with Alcohol and Drugs



This chart shows a different view of the same data above and identifies the days of the week when drugs or alcohol are a reported factor.

Factors Offenders



This chart shows the factors which was present with offenders.

These factors are only identified